

# Hikari

## Table Runner and Place Mats

14" x 62" and 11" x 14" (35cm x 1.5m and 28cm x 35cm)

by Lynne Goldsworthy of @lilysquilts  
visit [makoweruk.com](http://makoweruk.com) for more details



### Fabric Requirements

Fabric	Requirement	Cut
1473 Q1	1.5m / 1 ¾ yds	See step 1 below.
1473 C25	F8th	Four 1 ½" x 4 ½" strips
2516 L	FQ	Two 10" squares
2516 Q (binding)	75cms / ¾ yard	Nine 2 ½" WOF strips
2518 X	F8th	Thirty-two 1 ½" x 2 ½" strips
2519 X	F8th	Forty 1 ½" x 2 ½" strips
2520 R (backing)	1.75 m / 2 yds	One 18" x 66" rectangle Four 15" x 18" rectangles
2521 T	F8th	Eight 1 ½" x 4 ½" strips
2521 Y	F8th	Sixteen 1 ½" squares
2522 G	F8th	Twelve 1 ½" x 4 ½" strips
2522 L	F8th	Sixteen 1 ½" x 4 ½" strips
2522 R	F8th	Twelve 1 ½" squares
2522 T	F8th	Twenty-four 1 ½" squares
2522 X	F8th	Eighteen 1 ½" squares
2522 Y	F8th	Eight 1 ½" x 4 ½" strips
2523 1	One panel	See step 11
18" wide Bondaweb from <a href="http://www.vlieseline.com/en/">http://www.vlieseline.com/en/</a>	3m / 3yds	Nine 10" squares
Wadding 279 Cotton Mix 80:20 from <a href="http://www.vlieseline.com/en/">http://www.vlieseline.com/en/</a>		20" x 68" (50cm x 1.7m) 4 x 15" x 18" (4 x 40cm x 45cm)
Thread - Aurifil 50wt for piecing and 40wt for quilting from <a href="http://www.aurifil.com">http://www.aurifil.com</a>		
Templates - Four A templates, One B template, Four C templates		

[makoweruk](http://makoweruk.com)

Unit 14, Cordwallis Business Park, Clivemont Road, Maidenhead, Berkshire SL6 7BU  
+44(0)1628 509640 sales@makoweruk.com [www.makoweruk.com](http://www.makoweruk.com)

# Hikari Table Runner and Place Mats

14" x 62" and 11" x 14" (35cm x 1.5m and 28cm x 35cm)

## Notes:

- Make sure to visit <http://www.makoweruk.com/projects/> to ensure you are working from the most up-to-date version of the pattern
- Makower UK provides the written instructions only to accompany the named collection. Retailers are free to use these free instructions to provide a fabric kit. Accurate cutting of fabric is down to the individual retailer and any fabric supply enquires should be directed to point of purchase
- Read the pattern in full before starting
- $\frac{1}{4}$ " seams are used throughout except where stated otherwise
- Press after each seam, pressing seams open or to one side as preferred
- BKG - background
- WOF - width of fabric - a strip of fabric cut from selvedge to selvedge

## Making the runner and table mats

1. Cut the fabrics as shown in the fabric requirements table and 1473 Q1 (background "BKG") as follows:
  - Three 11" WOF strips cut into nine 11" squares. Cut the remainder of each of those strips into six  $1\frac{1}{2}$ " x 11" strips and cut those into one hundred and forty 1" and thirty-six  $1\frac{1}{2}$ " lengths.
  - Three  $1\frac{1}{2}$ " WOF strips cut into eighteen  $1\frac{1}{2}$ " and thirty-six  $3\frac{1}{2}$ " lengths.
  - Seventeen 1" WOF strips sewn end to end and cut into twenty-six  $10\frac{1}{2}$ ", two  $13\frac{1}{2}$ ", eight  $14\frac{1}{2}$ ", two  $61\frac{1}{2}$ " and two  $62\frac{1}{2}$ " lengths.
2. Following the fabric layout in the main project images, sew print  $1\frac{1}{2}$ " x  $2\frac{1}{2}$ " strips to either end of a BKG  $1\frac{1}{2}$ " x  $3\frac{1}{2}$ " strip. Sew BKG 1" x  $1\frac{1}{2}$ " strips to each end of this strip. See fig 1 step 1.
3. Sew BKG  $1\frac{1}{2}$ " squares to one side of these strips at each end. See fig 1 step 2.
4. Make two more of the strips made at 2 above. Sew print  $1\frac{1}{2}$ " squares onto each end. See fig 1 step 3.
5. Sew the strips made at 4 to the strips made at 2 and 3 as shown in figs 1 and 2.
6. Tape the four A templates together at the red lines to make one frame template and use this to cut out a circle from the centre of the frame piece made at 5. Mark the red dots onto the fabric by cutting small snips into the seam allowance. See fig 3.

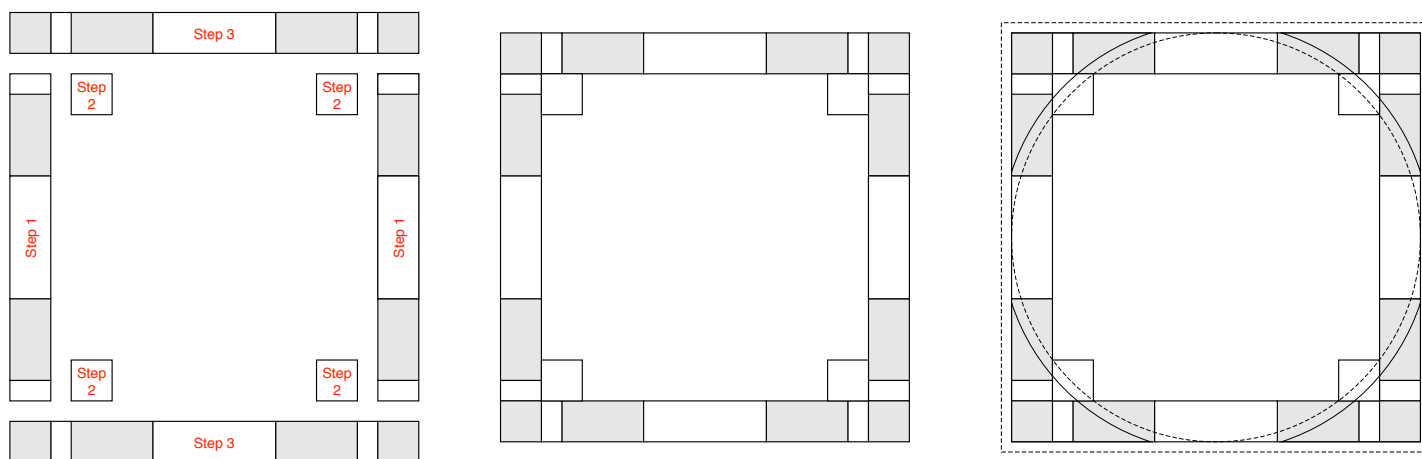


fig 1-3

7. Fold the BKG 11" squares in half and in half again. Place the B template onto each of these, aligning the marked fold lines of the template with the fold lines on the fabric and cut out nine circles along the black dashed lines, marking the red dots onto the fabric by cutting small snips into the seam allowance.
8. Sew the BKG circles to the frame pieces, taking care to align the marked red dots.

9. Tape together four C templates to make one complete circle (blue dashed line). Trace this circle onto four 10" squares of Bondaweb or other fusible web.
10. Fuse these 10" squares to the back of the two 10" squares of 2516 L fabric. Cut out to the blue dashed lines.
11. Fuse the remaining 10" squares of bondaweb to the back of the panel print, centering them over the circle motifs. Cut out to the edge of the gold circles around the motifs.
12. Fuse the nine circles to the centres of the pieces made at 8 above following the layout in the main project images.
13. Sew BKG 1" x 10 ½" strips to either side of each of the pieces made at 12.
14. Following the fabric layout in the main project images create twenty-four strips containing two print 1 ½" x 4 ½" strips, two BKG 1" x 1 ½" strips and one print 1 ½" square. See fig 4.

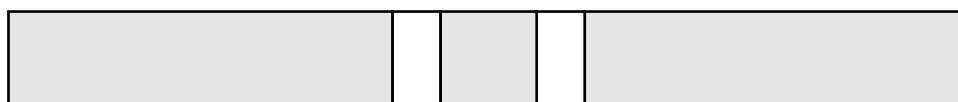
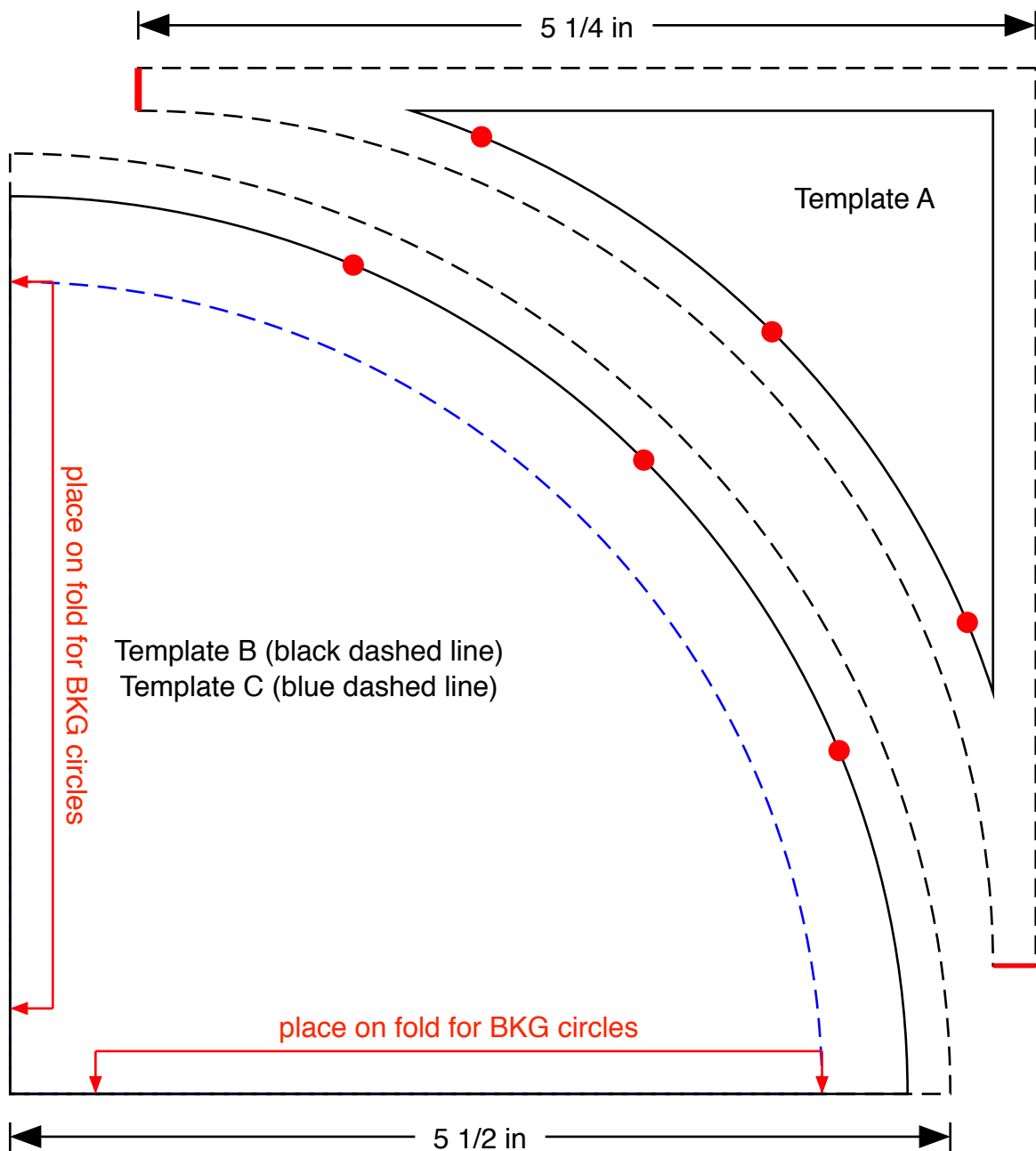


fig 4

15. For the mats, sew pairs of the strips made at 14 to either side of the centre blocks.
16. For the table runner, sew one long strip containing six of the strips made at 14 to the five blocks following the layout in the main project images.
17. For the mats, sash the sides with BKG 1" x 10 ½" strips then the top and bottom with BKG 1" x 14 ½" strips to finish.
18. For the runner, Sew BKG 1" x 61 ½" strips to the top and bottom of the piece made at 16.
19. Sew BKG 1" x 1 ½" strips to either side of eight of the red 1 ½" squares. Sew a BKG 1" x 1 ½" strip to one side of the remaining four red 1 ½" squares.
20. Sew the strips that run along the top and bottom of the table runner by sewing together the remaining eight of the strips made at 14 into two long strips each containing five of the strips made at 14, sashed together with the four red 1 ½" squares with BKG strips on both sides made at 19. Add the two red 1 ½" squares with BKG strips on just one side (made at 19) to the end of each of these. See the main project images for fabric layout.
21. Sew these strips to the top and bottom of the piece made at 18.
22. Sash the ends of the table runner with the BKG 1" x 13 ½" strips then the top and bottom with the 1" x 62½" strips to finish.

### **Finishing the runner and mats**

1. Sew the binding strips end to end using diagonal or straight seams as preferred and press wrong sides together along the length to make a double fold binding.
2. Make a quilt sandwich for each item, basting together the back, the wadding and the top.
3. Quilt as desired then trim square, removing excess wadding and backing.
4. Bind, taking care to mitre the corners.



Templates must be printed at 100% or "no scaling". To ensure the templates are the correct size, measure the guide lines to make sure they have printed at the correct





2516/L

Floral



2516/Q

Floral



2517/Q

Maple Leaves



2521/Y

Chrysanthemum



2517/L

Maple Leaves



2521/T

Chrysanthemum



2520/L

Cranes



2520/R

Cranes



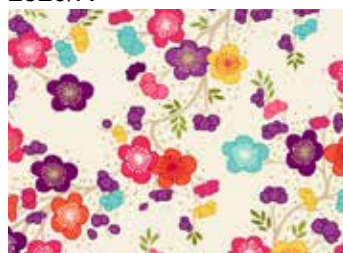
2518/X

Blossom



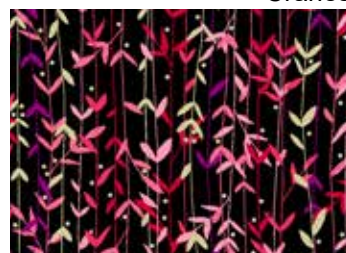
2519/T

Leaf Stripe



2518/Q

Blossom



2519/X

Leaf Stripe



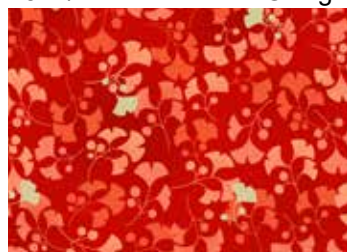
2522/Y

Ginkgo



2522/T

Ginkgo



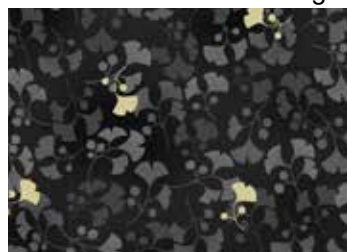
2522/R

Ginkgo



2522/L

Ginkgo



2522/X

Ginkgo



2522/G

Ginkgo



1473/C25



1473/T24



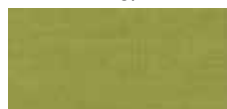
1473/T8



1473/Y4



1473/L7



1473/G6



2523/1

Panel

Each panel 24" x 44" (60 x 112cms)